

PRICING | CEDAR RIDGE HOMES



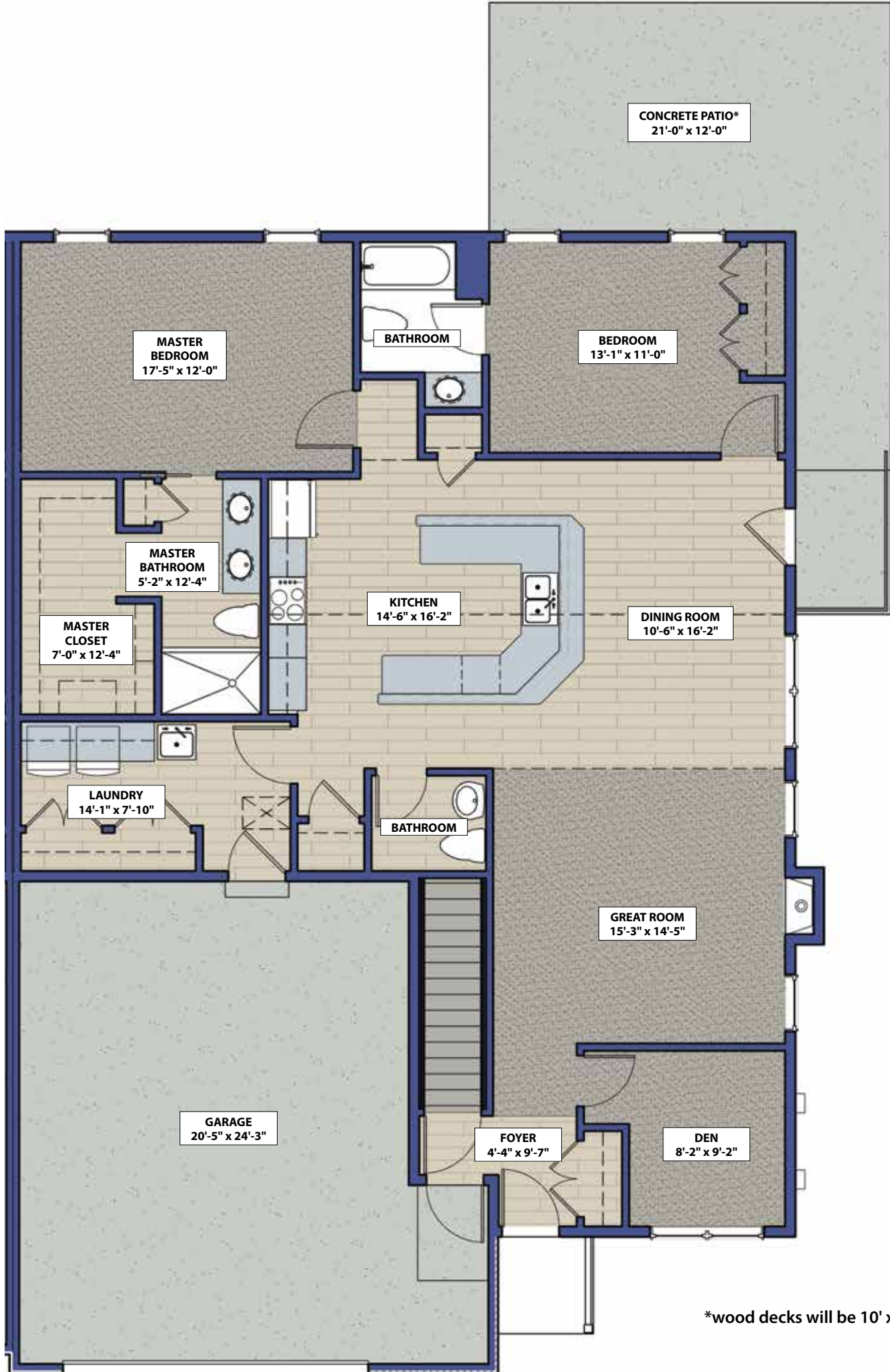
Entrance fee	Monthly fee
\$200,000 (0% refundable)	\$2,500
\$325,000 (90% refundable)	\$3,375

Pricing includes: Two-car garage, heat, air conditioning, water, sewer, gas, electric, basic cable, high-speed internet, snow removal, lawn cutting, garbage and recycling collection, routine interior and exterior maintenance, all appliances including washer and dryer.

Home features: Nearly 1,700 square feet. Two bedrooms, two and a half bathrooms, den, large laundry/utility room, two-car garage, basement, and upgraded appliances and finishes. All homes will have a patio or deck, and some will feature partial- or full- exposure basements. Enjoy a maintenance-free home inside and out!

Contact Cathy at 262.338.4615, or
Abby at 262.338.4617 for more information.





CONCRETE PATIO*
21'-0" x 12'-0"

MASTER
BEDROOM
17'-5" x 12'-0"

BATHROOM

BEDROOM
13'-1" x 11'-0"

MASTER
BATHROOM
5'-2" x 12'-4"

MASTER
CLOSET
7'-0" x 12'-4"

KITCHEN
14'-6" x 16'-2"

DINING ROOM
10'-6" x 16'-2"

LAUNDRY
14'-1" x 7'-10"

BATHROOM

GREAT ROOM
15'-3" x 14'-5"

GARAGE
20'-5" x 24'-3"

FOYER
4'-4" x 9'-7"

DEN
8'-2" x 9'-2"

*wood decks will be 10' x 12"